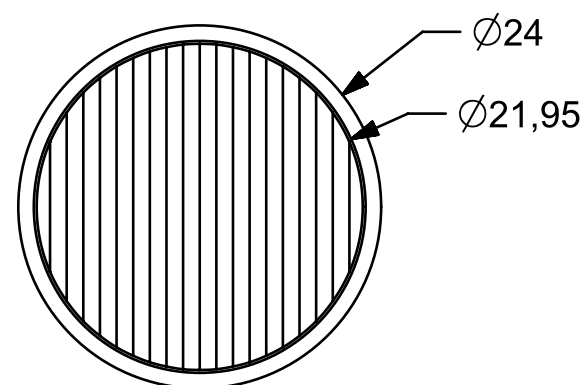
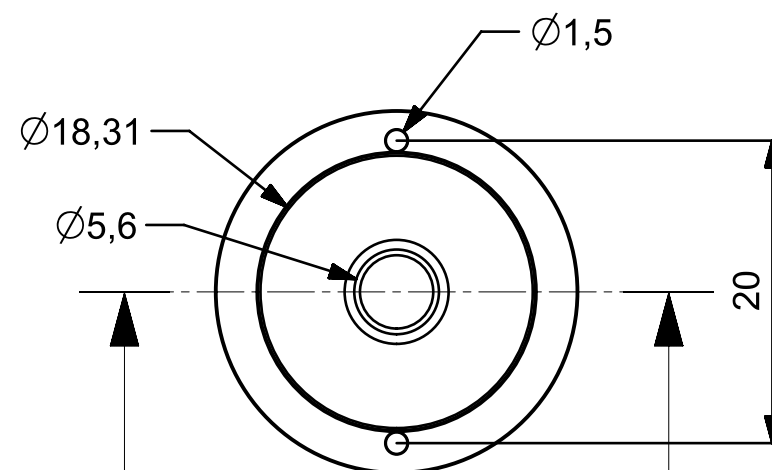


Top View

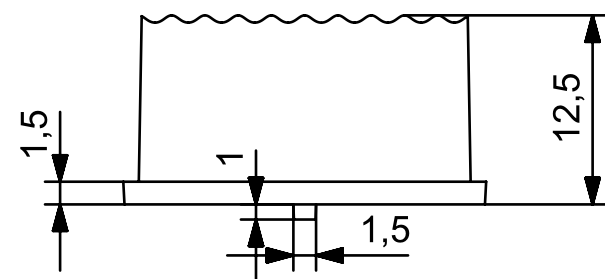
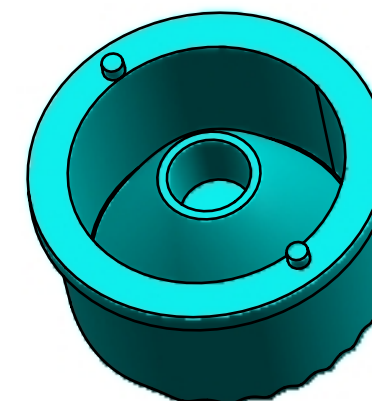
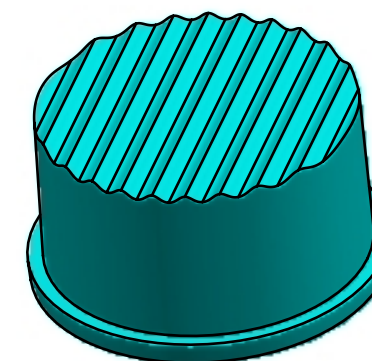


Bottom View

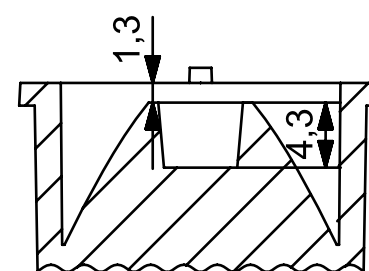


A

A


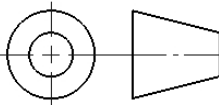


Side View



SECTION A-A

- Lens Material : Polycarbonate(Makrolon 2407&2647/Teijin 1225Z)
- Operating Temperature : PC:  $-40^{\circ}\text{C} \sim +110^{\circ}\text{C}$ (Upper Limit  $+120^{\circ}\text{C}$ )
- UL Flammability : PC 2407/1225Z: V-2 @0.75mm & HB @2.7mm
- UL RTI Elec : PC 2407/1225Z:  $125^{\circ}\text{C}$  @1.5mm
- Light Transmission Rate 400nm~900nm > 90%

<div><p><b>BEACON OPTRONICS</b> The Shape of light</p></div>			<p>Plastic Moulding Genral Tolerances if not otherwise shown According to DIN ISO 2768-1 Linear measures: up to 30mm class M, otherwise class C According to DIN ISO 2768-2 Form and position: class L</p>	<p>DO NOT SCALE DRAWING</p>		<p>FIRST ANGLE PROJECTION</p> <div></div>	
			<p><b>BEACON OPTRONICS</b></p>				
	NAME	SIGNATURE	DATE	<p>Family</p> <p><b>Sunbeam Series</b></p>			
DRAWN	RIJWAN	RIJWAN	23-08-25				
CHKD	YASH	YASH	23-08-25				
APPVD	PRADYUMNA	PRADYUMNA	23-08-25	PRT NO. <b>BO301-SUNBEAM-3535-60-10°</b>			
MATERIAL	Polycarbonate (Makrolon 2407 , Teijin 1225Z)			<p>DWG NO. <b>BO301</b></p> <p>A3</p> <p>REVISION-00</p>			
1:-All Dimensions are in mm 2:-Open Tolerance is +/- 0.2	This drawing is the property of Beacon Optronics. It may not be reproduced, copied or communicated without a written agreement with Beacon Optronics.						
WEIGHT: <b>4.5gm</b>							
			SCALE 1:1		SHEET 1 OF 1		