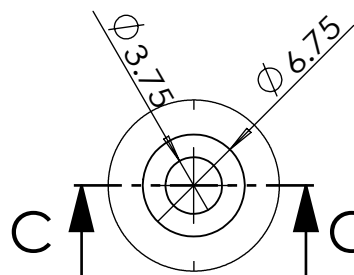
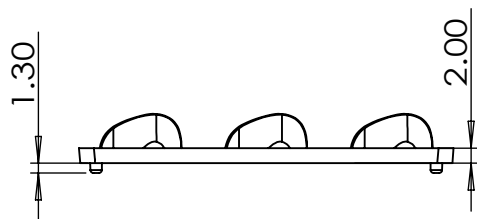


SECTION A-A

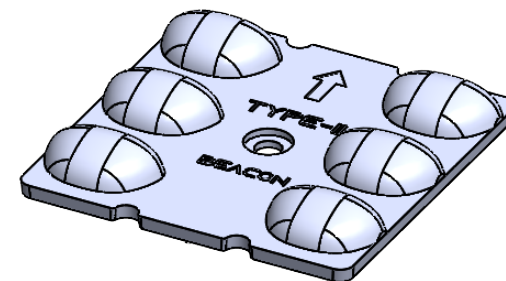


SECTION C-C


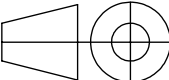
SCALE 2 : 1

DETAIL B

SCALE 2 : 1



- Lens Material : Polycarbonate(Makrolon 2407&2647/Teijin 1225Z)
- Operating Temperature : PC: -40°C~+110°C(Upper Limit +120°C)
- UL Flammability : PC 2407/1225Z: V-2 @0.75mm & HB @2.7mm
- UL RTI Elec : PC 2407/1225Z: 125°C @1.5mm
- Light Transmission Rate 400nm~900nm > 90%

<div></div> <div>BEACON OPTONICS The Shape of Light</div>			<div>Plastic Moulding General Tolerances if not otherwise shown: According to DIN ISO 2768-1 Linear measures: up to 30mm class M, otherwise class C According to DIN ISO 2768-2 Form and position: class L</div>			<div>DO NOT SCALE DRAWING</div>		<div>FIRST ANGLE PROJECTION</div> <div></div>			
						BEACON OPTONICS					
	NAME		SIGNATURE		DATE		<div>Family</div> <div>Ignite Series</div> <div>PRT NO.</div> <div>BO89-Ignite-6x1-5050-Type-II</div>				
DRAWN	Ankur Sharma		Ankur Sharma		22.07.2024						
CHK'D	Anuj Sharma		Anuj Sharma		22.07.2024						
APPVD	Pradyumna Shandilya		Pradyumna		22.07.2024						
MATERIAL:		Polycarbonate(Makrolon 2407,Teijin 1225Z)					<div>DWG NO.</div> <div>BO89</div> <div>REVISION-0.0</div>				
<div>1:-All Dimensions are in mm 2:-Open Tolerance is +/- 0.2</div>		This drawing is the property of Beacon Optonics. It may not be reproduced, copied or communicated without a written agreement with Beacon Optonics.									
		WEIGHT: 10Gm									
						SCALE:1:1		SHEET 1 OF 1			

Plastic Moulding General Tolerances if not otherwise shown According to DIN ISO 2768-1 Linear measures: up to 30mm class M, otherwise class C According to DIN ISO 2768-2 Form and position: class L