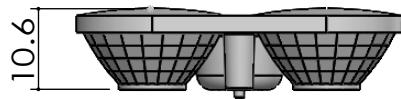
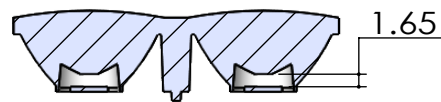
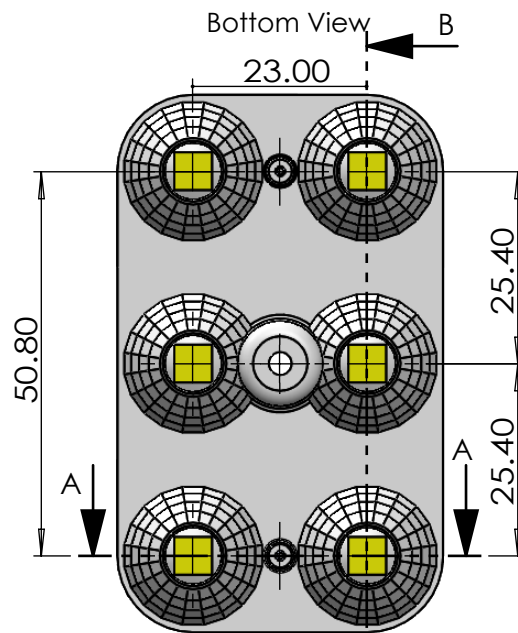


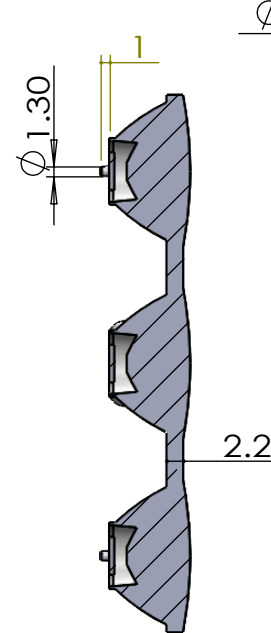
Non Optical Area
VDI-30 Frosted Surface



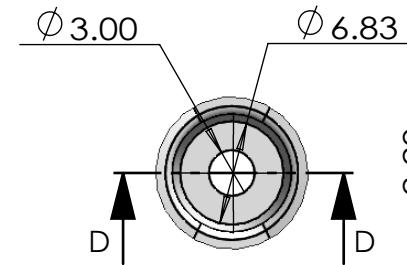
Side View



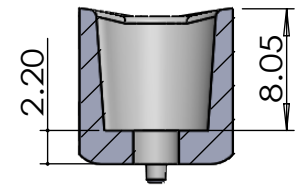
SECTION A-A



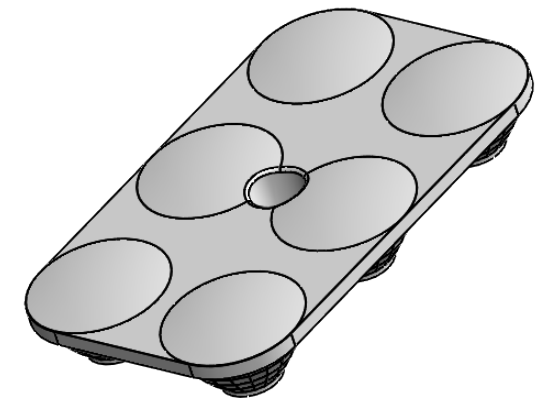
SECTION B-B



DETAIL C
SCALE 2 : 1





SECTION D-D
SCALE 2 : 1



Isometric View

- Lens Material : Polycarbonate(Makrolon 2407&2647/Teijin 1225Z)
- Operating Temperature : PC: -40°C~+110°C(Upper Limit +120°C)
- UL Flammability : PC 2407/1225Z: V-2 @0.75mm & HB @2.7mm
- UL RTI Elec : PC 2407/1225Z: 125°C @1.5mm
- Light Transmission Rate 400nm~900nm > 90%

 BEACON OPTRONICS The Shape of Light			Plastic Moulding General Tolerances if not otherwise shown According to DIN ISO 2768-1 Linear measures: up to 30mm class M, otherwise class C According to DIN ISO 2768-2 Form and position: class L			DO NOT SCALE DRAWING		FIRST ANGLE PROJECTION							
						BEACON OPTRONICS									
	NAME		SIGNATURE		DATE	<div>Family</div> <div>Custom Series</div> <div>PRT NO. BO81-Custom-6x1-5050-25°</div>									
DRAWN	Ankur Sharma		Ankur Sharma		5.04.2023										
CHK'D	Anuj Sharma		Anuj Sharma		5.04.2023										
APPV'D	Pradyumna Shandilya		Pradyumna		5.04.2023										
MATERIAL:	Polycarbonate(Makrolon 2407,Teijin 1225Z)					<div>DWG NO. BO81</div> <div>SCALE:1:1</div> <div>SHEET 1 OF 1</div>									
1:-All Dimensions are in mm 2:-Open Tolerance is +/- 0.2	This drawing is the property of Beacon Optronics. It may not be reproduced, copied or communicated without a written agreement with Beacon Optronics.											A4		REVISION:00	
	WEIGHT: 16.8 Gm														