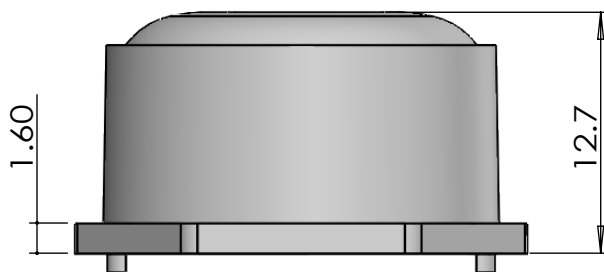
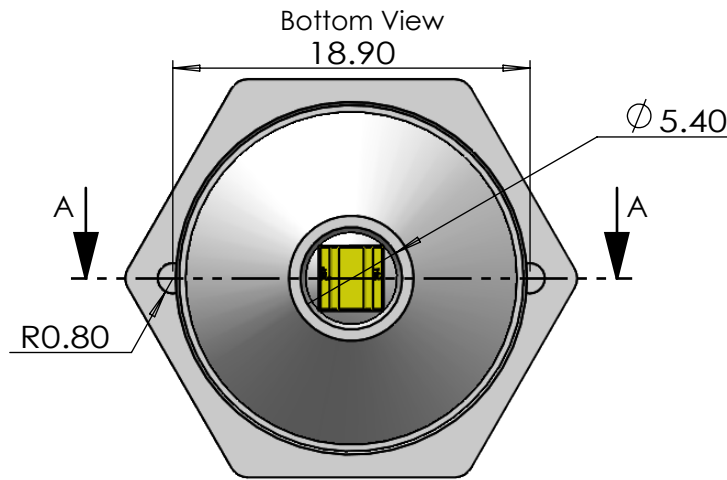


Top View
24

Non Optical Area
VDI-30 Frosted Surface



Side View



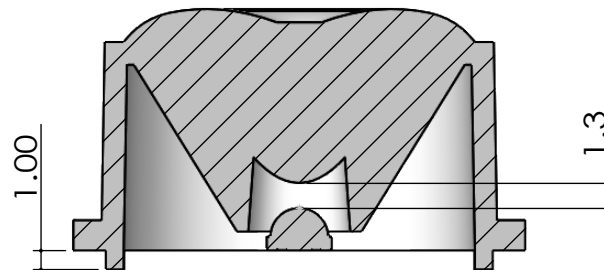
Bottom View
18.90

A

A

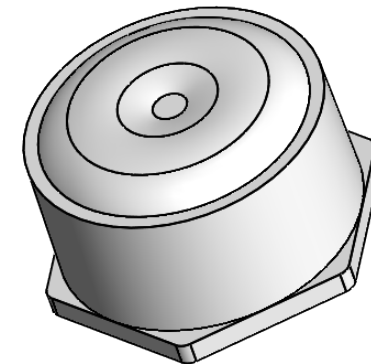
R0.80

Ø 5.40




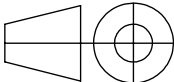
SECTION A-A

SCALE 2.5 : 1



Isometric View

- Lens Material : Polycarbonate(Makrolon 2407&2647/Teijin 1225Z)
- Operating Temperature : PC: -40°C~+110°C(Upper Limit +120°C)
- UL Flammability : PC 2407/1225Z: V-2 @0.75mm & HB @2.7mm
- UL RTI Elec : PC 2407/1225Z: 125°C @1.5mm
- Light Transmission Rate 400nm~900nm > 90%

 BEACON OPTRONICS The Shape of Light			Plastic Moulding General Tolerances if not otherwise shown: According to DIN ISO 2768-1 Linear measures: up to 30mm class M, otherwise class C According to DIN ISO 2768-2 Form and position: class L		DO NOT SCALE DRAWING		FIRST ANGLE PROJECTION					
					BEACON OPTRONICS							
	NAME		SIGNATURE		DATE		Family					
DRAWN	Ankur Sharma		Ankur Sharma		09.3.2024		Sunbeam Series					
CHK'D	Anuj Sharma		Anuj Sharma		09.03.2024							
APPV'D	Pradyumna Shandilya		Pradyumna		09.03.2024							
MATERIAL:		Polycarbonate(Makrolon 2407,Teijin 1225Z)				PRT NO.		BO78-Sunbeam-1x1-3535-9°				
1:-All Dimensions are in mm 2:-Open Tolerance is +/- 0.2		This drawing is the property of Beacon Optronics. It may not be reproduced, copied or communicated without a written agreement with Beacon Optronics.				DWG NO.		BO78			A4	
											REVISION:00	
		WEIGHT: 3.0Gm				SCALE:2:1		SHEET 1 OF 1				