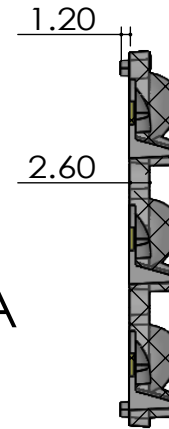
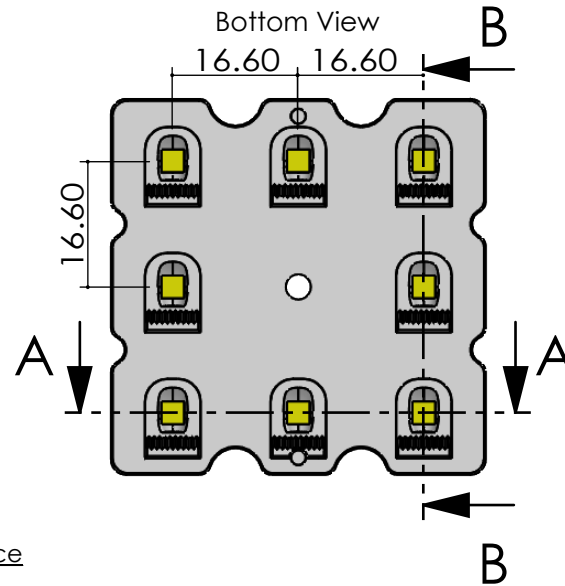
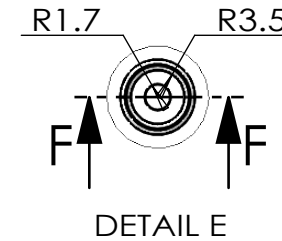


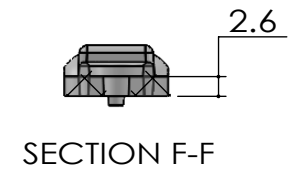
Non Optical Area
VDI-30 Frosted Surface



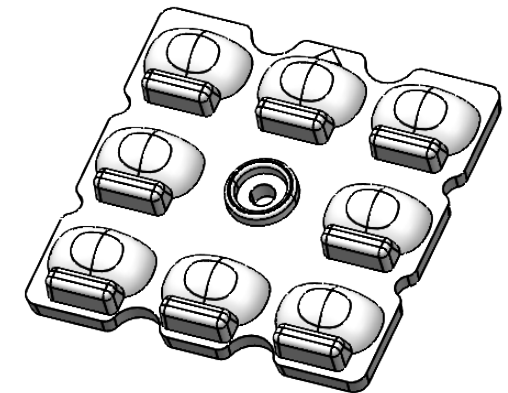
SECTION B-B



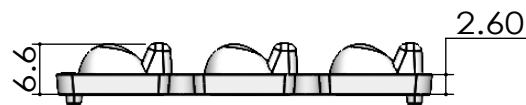
DETAIL E



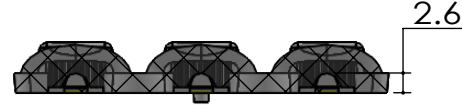
SECTION F-F



Isometric View





Side View



SECTION A-A

- Lens Material : Polycarbonate(Makrolon 2407&2647/Teijin 1225Z)
- Operating Temperature : PC: -40°C~+110°C(Upper Limit +120°C)
- UL Flammability : PC 2407/1225Z: V-2 @0.75mm & HB @2.7mm
- UL RTI Elec : PC 2407/1225Z: 125°C @1.5mm
- Light Transmission Rate 400nm~900nm > 90%

<div></div> <div>BEACON OPTONICS The Shape of Light</div>			<div>Plastic Moulding General Tolerances if not otherwise shown: According to DIN ISO 2768-1 Linear measures: up to 30mm class M, otherwise class C According to DIN ISO 2768-2 Form and position: class L</div>			<div>DO NOT SCALE DRAWING</div>		<div>FIRST ANGLE PROJECTION</div> <div></div>			
						BEACON OPTONICS					
	NAME		SIGNATURE		DATE		<div>Family</div> <div>Jupiter Series</div>				
DRAWN	Ankur Sharma		Ankur Sharma		5.04.2023						
CHK'D	Anuj Sharma		Anuj Sharma		5.04.2023						
APPV'D	Pradyumna Shandilya		Pradyumna		5.04.2023						
MATERIAL:		Polycarbonate(Makrolon 2407,Teijin 1225Z)				PRT NO.		BO77-Jupiter-8x1-3535-Type-II			
<div>1:-All Dimensions are in mm 2:-Open Tolerance is +/- 0.2</div>		<div>This drawing is the property of Beacon Optonics. It may not be reproduced, copied or communicated without a written agreement with Beacon Optonics.</div>				DWG NO.		BO77		A4	
								REVISION:00			
				WEIGHT: 9.7 Gm				SCALE:1:1		SHEET 1 OF 1	