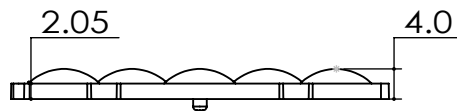
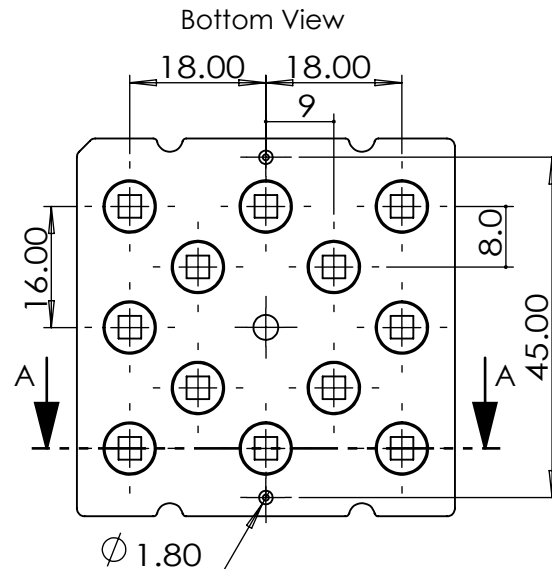


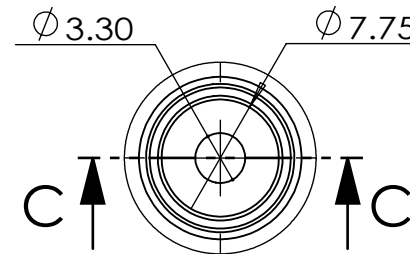
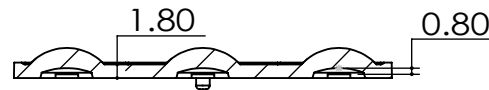
Non Optical Area
VDI-30 Frosted Surface



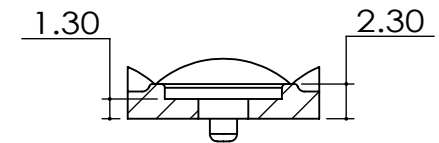
Side View



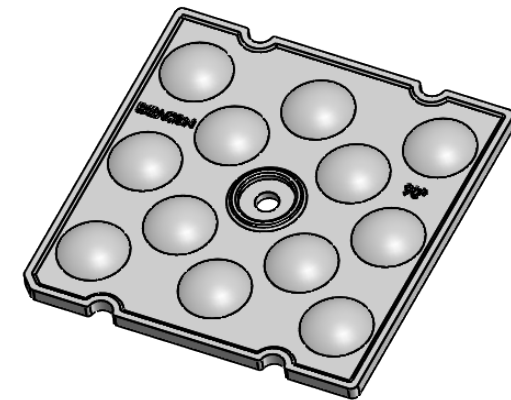
SECTION A-A



DETAIL B
SCALE 2 : 1


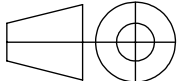


SECTION C-C
SCALE 2 : 1



Isometric View

- Lens Material : Polycarbonate(Makrolon 2407&2647/Teijin 1225Z)
- Operating Temperature : PC: -40°C~+110°C(Upper Limit +120°C)
- UL Flammability : PC 2407/1225Z: V-2 @0.75mm & HB @2.7mm
- UL RTI Elec : PC 2407/1225Z: 125°C @1.5mm
- Light Transmission Rate 400nm~900nm > 90%

<div><div>BEACON OPTONICS The Shape of Light</div></div>				<div>Plastic Moulding General Tolerances if not otherwise shown According to DIN ISO 2768-1 Linear measures: up to 30mm class M, otherwise class C According to DIN ISO 2768-2 Form and position: class L</div>		<div>DO NOT SCALE DRAWING</div>		<div>FIRST ANGLE PROJECTION</div> <div></div>			
						BEACON OPTONICS					
	NAME		SIGNATURE		DATE		<div>Family</div> <div>Polstar Series</div> <div>PRT NO.</div> <div>BO72-Polstar-12x1-2835/3030-90°</div>				
DRAWN		Ankur Sharma		Ankur Sharma		5.04.2023					
CHK'D		Anuj Sharma		Anuj Sharma		5.04.2023					
APP'VD		Pradyumna Shandilya		Pradyumna		5.04.2023					
MATERIAL:		Polycarbonate(Makrolon 2407,Teljin 1225Z)					<div>DWG NO.</div> <div>BO72</div> <div>A4</div> <div>REVISION:00</div>				
<div>1:-All Dimensions are in mm 2:-Open Tolerance is +/- 0.2</div>		<div>This drawing is the property of Beacon Optonics. It may not be reproduced, copied or communicated without a written agreement with Beacon Optonics.</div> <div>WEIGHT: 6.6 Gm</div>									
				SCALE:1:1		SHEET 1 OF 1					

	NAME	SIGNATURE	DATE
DRAWN	Ankur Sharma	Ankur Sharma	5.04.2023
CHK'D	Anuj Sharma	Anuj Sharma	5.04.2023
APPVD	Pradyumna Shandilya	Pradyumna	5.04.2023
MATERIAL: Polycarbonate(Makrolon 2407,Teijin 1225Z)			
This drawing is the property of Beacon Optonics. It may not be reproduced, copied or communicated without a written agreement with Beacon Optonics.			
WEIGHT: 6.6 Gm			

- 1:-All Dimensions are in mm
- 2:-Open Tolerance is +/- 0.2