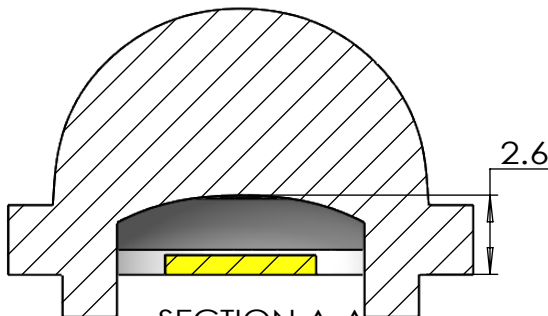
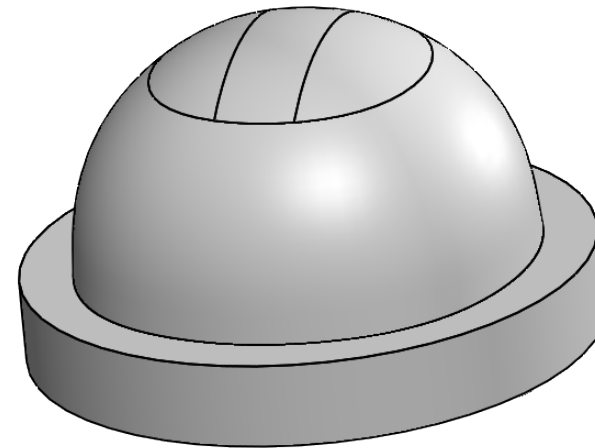


Side View


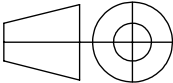


SECTION A-A
SCALE 4 : 1



Isometric View

- Lens Material : Polycarbonate(Makrolon 2407&2647/Teijin 1225Z)
- Operating Temperature : PC: -40°C~+110°C(Upper Limit +120°C)
- UL Flammability : PC 2407/1225Z: V-2 @0.75mm & HB @2.7mm
- UL RTI Elec : PC 2407/1225Z: 125°C @1.5mm
- Light Transmission Rate 400nm~900nm > 90%

<div><div>BEACON OPTRONICS The Shape of Light</div></div>				<div>Plastic Moulding General Tolerances if not otherwise shown According to DIN ISO 2768-1 Linear measures: up to 30mm class M, otherwise class C According to DIN ISO 2768-2 Form and position: class L</div>		<div>DO NOT SCALE DRAWING</div>		<div>FIRST ANGLE PROJECTION</div> <div></div>	
				<div>BEACON OPTRONICS</div>					
	NAME	SIGNATURE	DATE	<div>Family</div> <div>Sunbeam Series</div> <div>PRT NO.</div> <div>BO62-Sunbeam-1x1-5050-60°</div>					
DRAWN	Ankur Sharma	Ankur Sharma	5.04.2023						
CHK'D	Anuj Sharma	Anuj Sharma	5.04.2023						
APPV'D	Pradyumna Shandilya	Pradyumna	5.04.2023						
MATERIAL:				Polycarbonate(Makrolon 2407,Teijin 1225Z)				<div>DWG NO.</div> <div>BO62</div> <div>A4</div> <div>REVISION:00</div>	
1:-All Dimensions are in mm 2:-Open Tolerance is +/- 0.2				This drawing is the property of Beacon Optronics. It may not be reproduced, copied or communicated without a written agreement with Beacon Optronics.					
WEIGHT: 1.0Gm									
				SCALE:5:1		SHEET 1 OF 1			