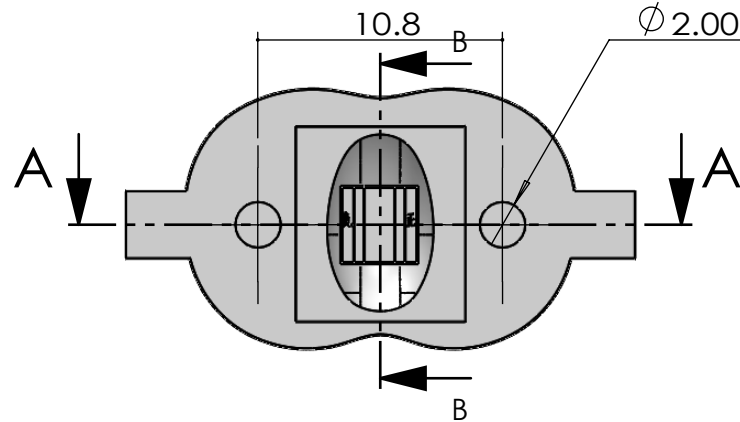
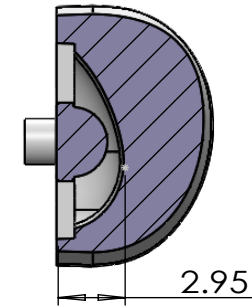


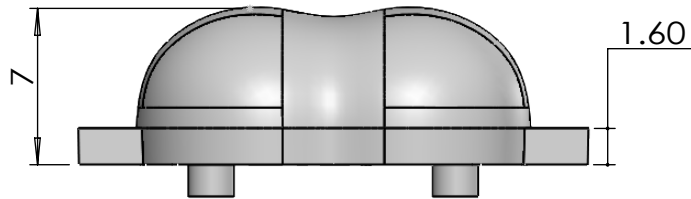
Top View



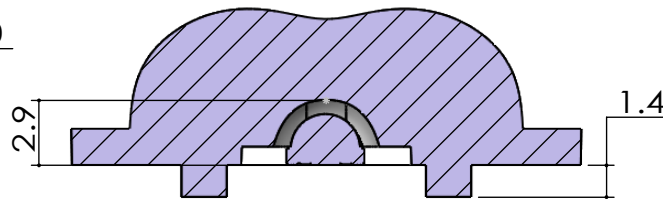
Bottom View



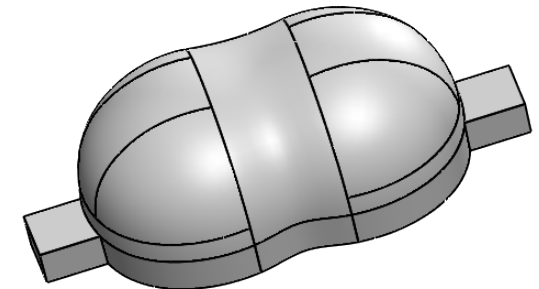
SECTION B-B  
SCALE 3 : 1



Side View





SECTION A-A  
SCALE 3 : 1



Isometric View

- Lens Material : Polycarbonate(Makrolon 2407&2647/Teijin 1225Z)
- Operating Temperature : PC: -40°C~+110°C(Upper Limit +120°C)
- UL Flammability : PC 2407/1225Z: V-2 @0.75mm & HB @2.7mm
- UL RTI Elec : PC 2407/1225Z: 125°C @1.5mm
- Light Transmission Rate 400nm~900nm > 90%

 <div>BEACON OPTRONICS The Shape of Light</div>				<div>Plastic Moulding General Tolerances if not otherwise shown: According to DIN ISO 2768-1 Linear measures: up to 30mm class M, otherwise class C According to DIN ISO 2768-2 Form and position: class L</div>				<div>DO NOT SCALE DRAWING</div>		<div>FIRST ANGLE PROJECTION</div> 	
<div>BEACON OPTRONICS</div>											
		NAME		SIGNATURE		DATE		<div>Family</div> <div>Sunbeam Series</div> <div>PRT NO. <b>BO42-Sunbeam-1x1-3535-70x140°</b></div>			
DRAWN		Ankur Sharma		Ankur Sharma		5.06.2023					
CHK'D		Anuj Sharma		Anuj Sharma		5.06.2023					
APPV'D		Pradyumna Shandilya		Pradyumna		5.06.2023					
MATERIAL:		Polycarbonate(Makrolon 2407,Teijin 1225Z)									
<div>1:-All Dimensions are in mm 2:-Open Tolerance is +/- 0.2</div>		<div>This drawing is the property of Beacon Optronics. It may not be reproduced, copied or communicated without a written agreement with Beacon Optronics.</div>						DWG NO. <b>BO42</b>		A4	
										REVISION:00	
		WEIGHT: 1.1Gm						SCALE:5:1		SHEET 1 OF 1	