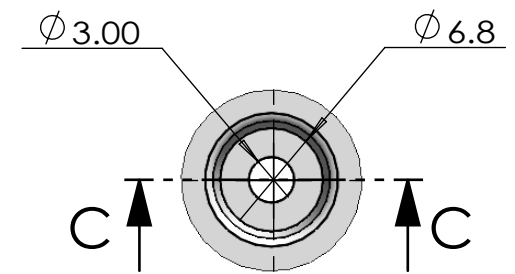
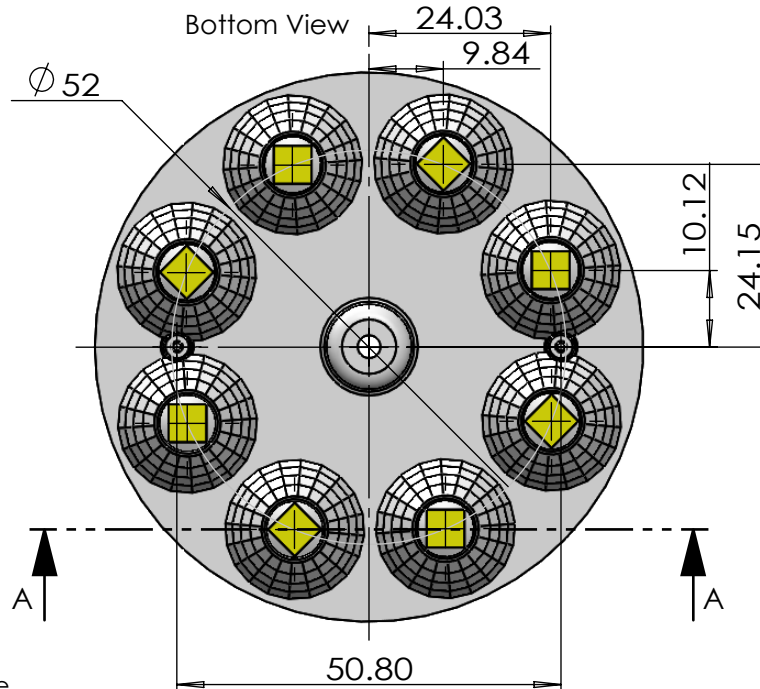
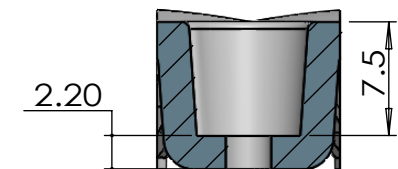


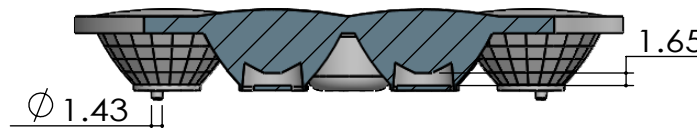
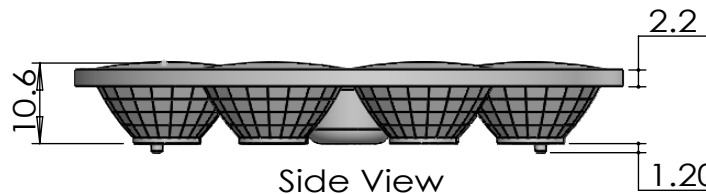
Non Optical Area  
VDI-30 Frosted Surface



DETAIL B  
SCALE 2 : 1





SECTION C-C  
SCALE 2 : 1



SECTION A-A

- Lens Material : Polycarbonate(Makrolon 2407&2647/Teijin 1225Z)
- Operating Temperature : PC: -40°C~+110°C(Upper Limit +120°C)
- UL Flammability : PC 2407/1225Z: V-2 @0.75mm & HB @2.7mm
- UL RTI Elec : PC 2407/1225Z: 125°C @1.5mm
- Light Transmission Rate 400nm~900nm > 90%

 <b>BEACON OPTRONICS</b> The Shape of Light			Plastic Moulding General Tolerances if not otherwise shown: According to DIN ISO 2768-1 Linear measures: up to 30mm class M, otherwise class C According to DIN ISO 2768-2 Form and position: class L			DO NOT SCALE DRAWING		FIRST ANGLE PROJECTION			
<b>BEACON OPTRONICS</b>											
		NAME	SIGNATURE	DATE		<div>Family</div> <div>Custom Series</div> <div>PRT NO. BO40-Custom-8x1-3535/5050-25°</div>					
DRAWN		Ankur Sharma	Ankur Sharma	5.04.2023							
CHK'D		Anuj Sharma	Anuj Sharma	5.04.2023							
APPV'D		Pradyumna Shandilya	Pradyumna	5.04.2023							
MATERIAL:		Polycarbonate(Makrolon 2407,Teijin 1225Z)				<div>DWG NO. BO40</div> <div>A4</div> <div>REVISION</div>					
1:-All Dimensions are in mm  2:-Open Tolerance is +/- 0.2		This drawing is the property of Beacon Optronics. It may not be reproduced, copied or communicated without a written agreement with Beacon Optronics.									
WEIGHT: 23 Gm				SCALE:1:1				SHEET 1 OF 1			