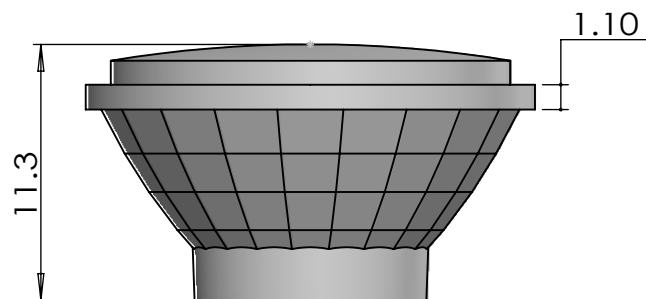
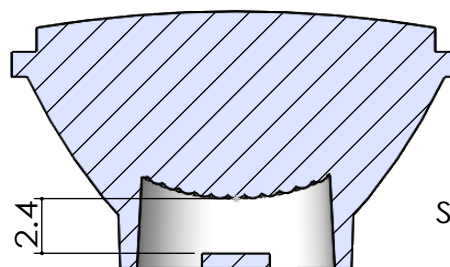


Isometric View






Side View



SECTION A-A
SCALE 3 : 1

- Lens Material : Polycarbonate(Makrolon 2407&2647/Teijin 1225Z)
- Operating Temperature : PC: -40°C~+110°C(Upper Limit +120°C)
- UL Flammability : PC 2407/1225Z: V-2 @0.75mm & HB @2.7mm
- UL RTI Elec : PC 2407/1225Z: 125°C @1.5mm
- Light Transmission Rate 400nm~900nm > 90%

 BEACON OPTRONICS The Shape of Light			Plastic Moulding General Tolerances if not otherwise shown: According to DIN ISO 2768-1 Linear measures: up to 30mm class M, otherwise class C According to DIN ISO 2768-2 Form and position: class L		DO NOT SCALE DRAWING		FIRST ANGLE PROJECTION 		
					BEACON OPTRONICS				
	NAME	SIGNATURE	DATE	Family					
DRAWN	Ankur Sharma	Ankur Sharma	5.04.2023	Sunbeam Series					
CHK'D	Anuj Sharma	Anuj Sharma	5.04.2023	PRT NO. BO38-Sunbeam-1x1-2835/3030-25°					
APPV'D	Pradyumna Shandilya	Pradyumna	5.04.2023						
MATERIAL:	Polycarbonate(Makrolon 2407,Teijin 1225Z)			DWG NO. BO38					
1:-All Dimensions are in mm 2:-Open Tolerance is +/- 0.2	This drawing is the property of Beacon Optronics. It may not be reproduced, copied or communicated without a written agreement with Beacon Optronics.			A4				REVISION:0	
				WIGHT: 2.1 Gm				SCALE:5:1	SHEET 1 OF 1

		Plastic Moulding Gen Tolerances if not otherwise shown According to DIN ISO 2768-1 Linear measure up to 30mm class M, otherwise class C According to DIN ISO 2768-2 Form and position: ck	
BEACON OPTRONICS "The Shape of light"			
	NAME	SIGNATURE	DATE
DRAWN	Ankur Sharma	Ankur Sharma	5.04.2023
CHK'D	Anuj Sharma	Anuj Sharma	5.04.2023
APPV'D	Pradyumna Shandilya	Pradyumna	5.04.2023
MATERIAL:	Polycarbonate(Makrolon 2407,Teijin 1225Z)		
1:-All Dimensions are in mm 2:-Open Tolerance is +/- 0.2	This drawing is the property of Beacon Optronics. It may not be reproduced, copied or communicated without a written agreement with Beacon Optronics.		
WEIGHT: 2.1 Gm			