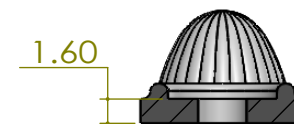
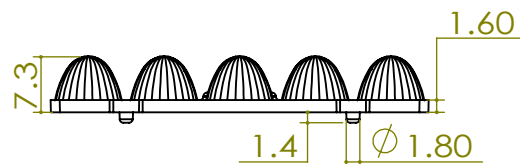


DETAIL B
SCALE 2 : 1



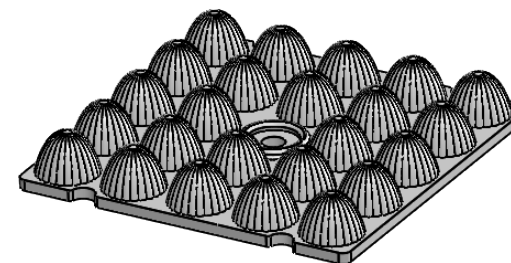
SECTION C-C
SCALE 2 : 1



Side View


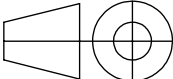


SECTION A-A



Isometric View

- Lens Material : Polycarbonate(Makrolon 2407&2647/Teijin 1225Z)
- Operating Temperature : PC: -40°C~+110°C(Upper Limit +120°C)
- UL Flammability : PC 2407/1225Z: V-2 @0.75mm & HB @2.7mm
- UL RTI Elec : PC 2407/1225Z: 125°C @1.5mm
- Light Transmission Rate 400nm~900nm > 90%

<div></div> <div>BEACON OPTRONICS The Shape of Light</div>			<div>Plastic Moulding General Tolerances if not otherwise shown According to DIN ISO 2768-1 Linear measures: up to 30mm class M, otherwise class C According to DIN ISO 2768-2 Form and position: class L</div>		<div>DO NOT SCALE DRAWING</div>		<div>FIRST ANGLE PROJECTION</div> <div></div>	
BEACON OPTRONICS								
	NAME	SIGNATURE	DATE	Family Blaze Series			PRT NO. BO34-Blaze-24x1-28353030-20°	
DRAWN	Ankur Sharma	Ankur Sharma	5.01.2024					
CHK'D	Anuj Sharma	Anuj Sharma	5.01.2024					
APP'VD	Pradyumna Shandilya	Pradyumna	5.01.2024					
MATERIAL:	Polycarbonate(Makrolon 2407,Teijin 1225Z)							
1:-All Dimensions are in mm 2:-Open Tolerance is +/- 0.2	This drawing is the property of Beacon Optronics. It may not be reproduced, copied or communicated without a written agreement with Beacon Optronics.			DWG NO. BO34			A4	
							REVISION	
WEIGHT: 8.6Gm			SCALE:1:1		SHEET 1 OF 1			