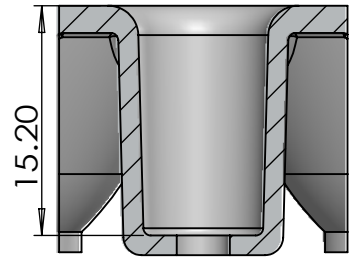
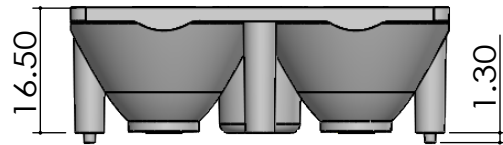


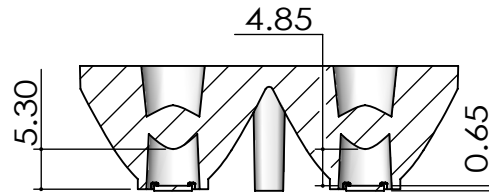
DETAIL B
SCALE 2 : 1



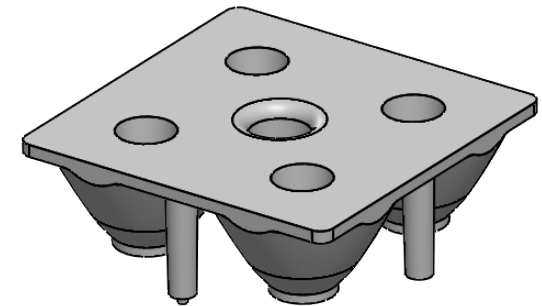
SECTION C-C
SCALE 2 : 1



Side View


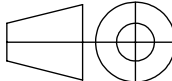


SECTION A-A



Isometric View

- Lens Material : Polycarbonate(Makrolon 2407&2647/Teijin 1225Z)
- Operating Temperature : PC: -40°C~+110°C(Upper Limit +120°C)
- UL Flammability : PC 2407/1225Z: V-2 @0.75mm & HB @2.7mm
- UL RTI Elec : PC 2407/1225Z: 125°C @1.5mm
- Light Transmission Rate 400nm~900nm > 90%

 <div>BEACON OPTRONICS The Shape of Light</div>			<div>Plastic Moulding General Tolerances if not otherwise shown: According to DIN ISO 2768-1 Linear measures: up to 30mm class M, otherwise class C According to DIN ISO 2768-2 Form and position: class L</div>			DO NOT SCALE DRAWING		FIRST ANGLE PROJECTION 			
						BEACON OPTRONICS					
	NAME		SIGNATURE		DATE		Family Glitter Series				
DRAWN	Ankur Sharma		Ankur Sharma		22.12.2023						
CHK'D	Anuj Sharma		Anuj Sharma		22.12.2023						
APPV'D	Pradyumna Shandilya		Pradyumna		22.12.2023						
MATERIAL:		Polycarbonate(Makrolon 2407,Teijin 1225Z)				PRT NO.		BO32-Glitter-2x2-5050-15°			
1:-All Dimensions are in mm 2:-Open Tolerance is +/- 0.2		This drawing is the property of Beacon Optronics. It may not be reproduced, copied or communicated without a written agreement with Beacon Optronics.				DWG NO.		BO32		A4	
								REVISION:00			
		WEIGHT: 21.7 Gm				SCALE:1:1		SHEET 1 OF 1			