

6 5 4 3 2 1

F

F

E

E

D

D

C

C

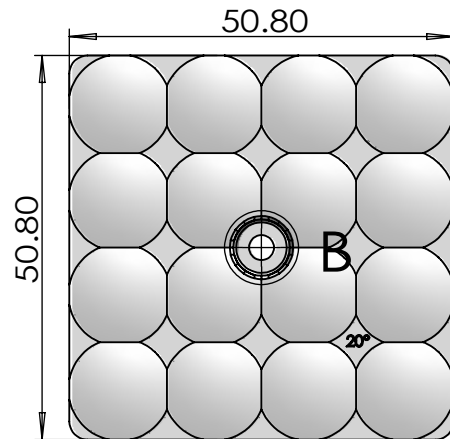
B

B

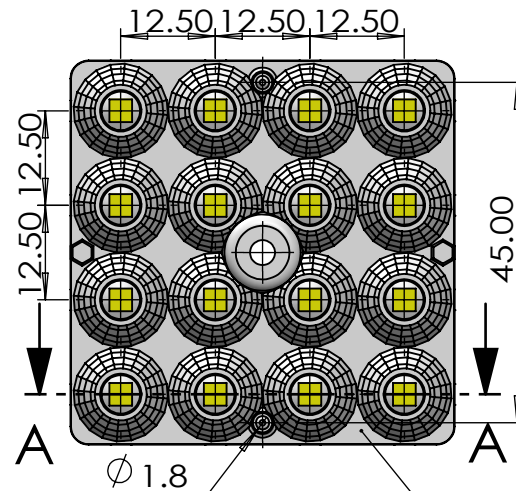
A

A

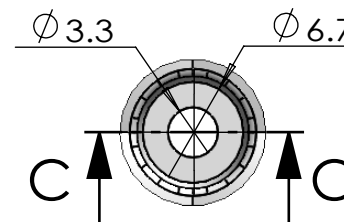
Top View



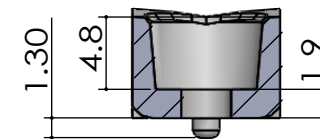
Bottom View



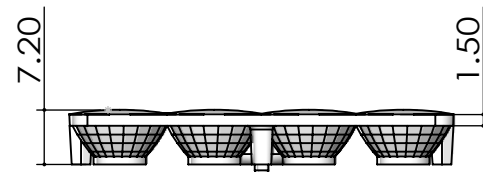
Non Optical Area
VDI-30 Frosted Surface



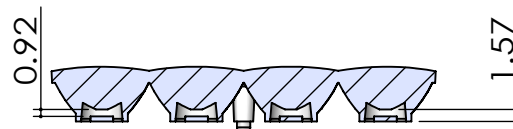
DETAIL B
SCALE 2 : 1



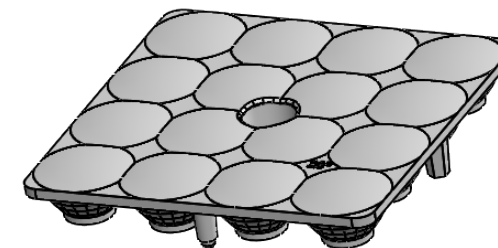
SECTION C-C
SCALE 2 : 1



Side View


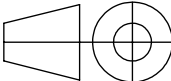


SECTION A-A



Isometric View

- Lens Material : Polycarbonate(Makrolon 2407&2647/Teijin 1225Z)
- Operating Temperature : PC: -40°C~+110°C(Upper Limit +120°C)
- UL Flammability : PC 2407/1225Z: V-2 @0.75mm & HB @2.7mm
- UL RTI Elec : PC 2407/1225Z: 125°C @1.5mm
- Light Transmission Rate 400nm~900nm > 90%

 BEACON OPTRONICS The Shape of Light			Plastic Moulding General Tolerances If not otherwise shown According to DIN ISO 2768-1 Linear measures: up to 30mm class M, otherwise class C According to DIN ISO 2768-2 Form and position: class L		DO NOT SCALE DRAWING		FIRST ANGLE PROJECTION 			
					BEACON OPTRONICS					
		NAME	SIGNATURE	DATE	Family Shimmer Series					
DRAWN		Ankur Sharma	Ankur Sharma	5.04.2023						
CHK'D		Anuj Sharma	Anuj Sharma	5.04.2023						
APP'VD		Pradyumna Shandilya	Pradyumna	5.04.2023						
MATERIAL:		Polycarbonate(Makrolon 2407,Teijin 1225Z)			PRT NO. BO23-Shimmer-16x1-28353030-25°					
1:-All Dimensions are in mm 2:-Open Tolerance is +/- 0.2		This drawing is the property of Beacon Optronics. It may not be reproduced, copied or communicated without a written agreement with Beacon Optronics.			DWG NO. BO23				A4	
									REVISION NO.	
		WEIGHT: 12.1Gm			SCALE:1:1				SHEET 1 OF 1	