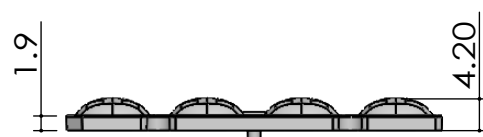
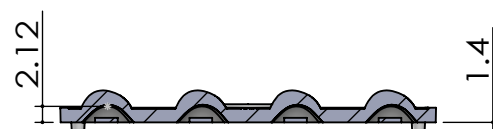
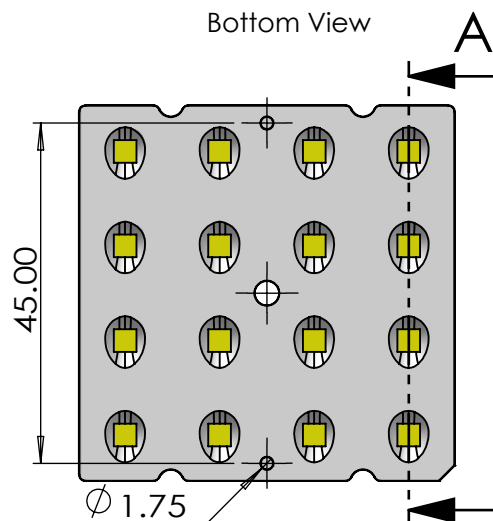


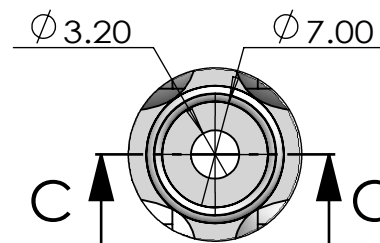
Non Optical Area  
VDI-30 Frosted Surface



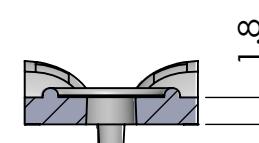
Side View



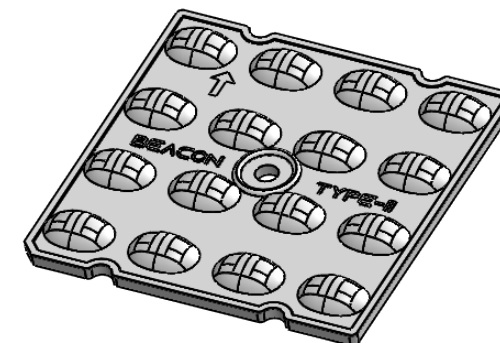
SECTION A-A



DETAIL B  
SCALE 2 : 1





SECTION C-C  
SCALE 2 : 1



Isometric View

- Lens Material : Polycarbonate(Makrolon 2407&2647/Teijin 1225Z)
- Operating Temperature : PC: -40°C~+110°C(Upper Limit +120°C)
- UL Flammability : PC 2407/1225Z: V-2 @0.75mm & HB @2.7mm
- UL RTI Elec : PC 2407/1225Z: 125°C @1.5mm
- Light Transmission Rate 400nm~900nm > 90%

 <b>BEACON OPTRONICS</b> The Shape of Light			Plastic Moulding General Tolerances if not otherwise shown According to DIN ISO 2768-1 Linear measures: up to 30mm class M, otherwise class C According to DIN ISO 2768-2 Form and position: class L			DO NOT SCALE DRAWING			FIRST ANGLE PROJECTION 											
						<b>BEACON OPTRONICS</b>														
			NAME			SIGNATURE			DATE			Family								
DRAWN			Ankur Sharma			Ankur Sharma			13.03.2023			<b>Shimmer Series</b>								
CHK'D			Anuj Sharma			Anuj Sharma			13.03.2023											
APP'VD			Pradyumna Shandilya			Pradyumna			13.03.2023											
MATERIAL:			Polycarbonate(Makrolon 2407,Teijin 1225Z)									PRT NO.			<b>BO12-Shimmer-16x1-28353030-T2</b>					
<div>1:-All Dimensions are in mm</div> <div>2:-Open Tolerance is +/- 0.2</div>			This drawing is the property of Beacon Optronics. It may not be reproduced, copied or communicated without a written agreement with Beacon Optronics.									DWG NO.			<b>BO12</b>			A4		
			WEIGHT: 6.5Gm									SCALE:1:1			SHEET 1 OF 1			REVISION NO.		