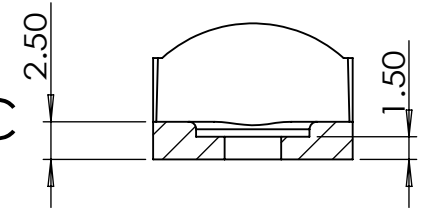
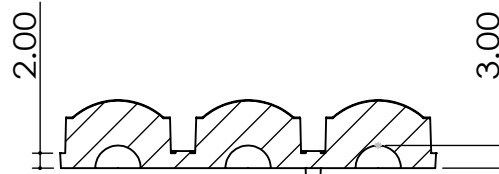
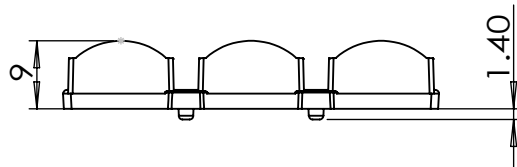


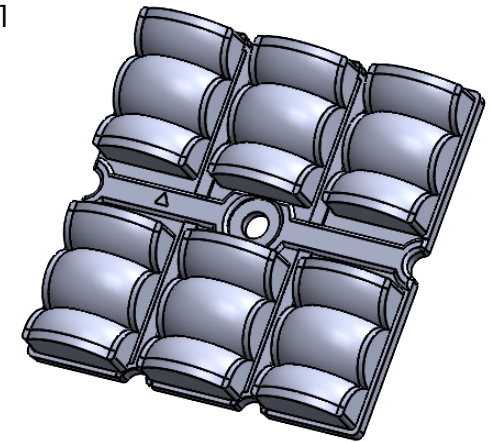
**DETAIL B**  
SCALE 2 : 1





**SECTION C-C**  
SCALE 2 : 1



**SECTION A-A**



- Lens Material : Polycarbonate(Makrolon 2407&2647/Teijin 1225Z)
- Operating Temperature : PC: -40°C~+110°C(Upper Limit +120°C)
- UL Flammability : PC 2407/1225Z: V-2 @0.75mm & HB @2.7mm
- UL RTI Elec : PC 2407/1225Z: 125°C @1.5mm
- Light Transmission Rate 400nm~900nm > 90%

<div></div> <div>BEACON OPTRONICS The Shape of Light</div>			<div>Plastic Mounting General Tolerances if not otherwise shown: According to DIN ISO 2768-1 Linear measures: up to 30mm class M, otherwise class C According to DIN ISO 2768-2 Form and position: class L</div>		<div>DO NOT SCALE DRAWING</div>		<div>FIRST ANGLE PROJECTION</div> <div></div>	
BEACON OPTRONICS								
	NAME	SIGNATURE	DATE	Family <div>IgniteSeries</div>				
DRAWN	Ankur Sharma	Ankur Sharma	22.07.2024					
CHK'D	Anuj Sharma	Anuj Sharma	22.07.2024	PRT NO. <div>BO102-Ignite-6x1-5050-BFL</div>				
APPV'D	Pradyumna Shandilya	Pradyumna	22.07.2024					
MATERIAL:	Polycarbonate(Makrolon 2407,Teijin 1225Z)			DWG NO. <div>BO102</div> <div>A4</div> <div>REVISION</div>				
1:-All Dimensions are in mm 2:-Open Tolerance is +/- 0.2								
WEIGHT: 15Gm				SCALE:1:1		SHEET 1 OF 1		

Plastic Moulding General Tolerances if not otherwise shown According to DIN ISO 2768-1 Linear measures: up to 30mm class M, otherwise class C According to DIN ISO 2768-2 Form and position: class L