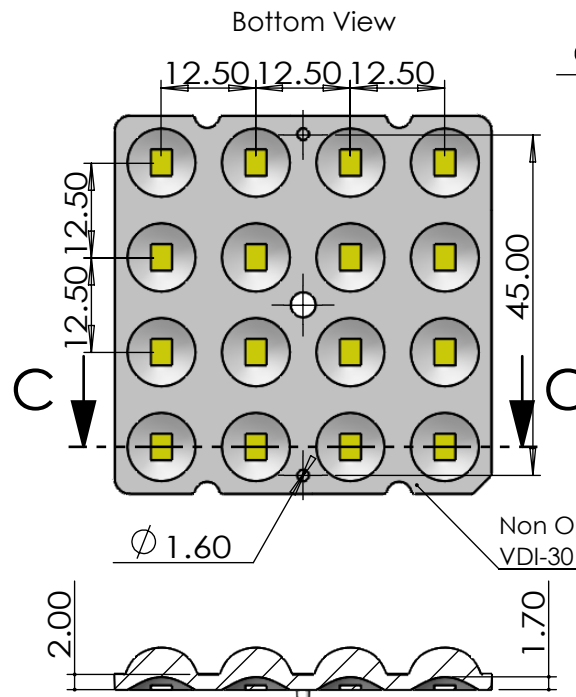
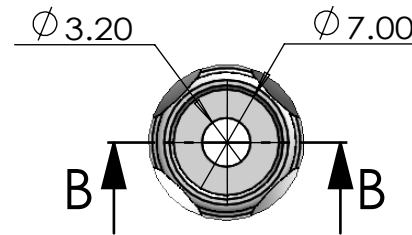


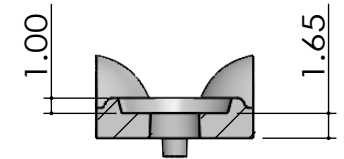
Side View



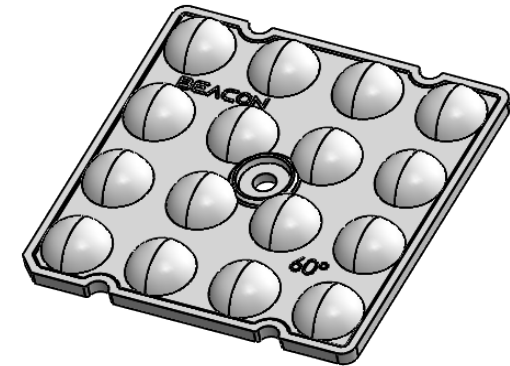
SECTION C-C



DETAIL A
SCALE 2 : 1


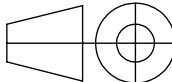


SECTION B-B
SCALE 2 : 1



Isometric View

- Lens Material : Polycarbonate(Makrolon 2407&2647/Teijin 1225Z)
- Operating Temperature : PC: -40°C~+110°C(Upper Limit +120°C)
- UL Flammability : PC 2407/1225Z: V-2 @0.75mm & HB @2.7mm
- UL RTI Elec : PC 2407/1225Z: 125°C @1.5mm
- Light Transmission Rate 400nm~900nm > 90%

<div></div> <div>BEACON OPTONICS The Shape of Light</div>				<div>Plastic Moulding General Tolerances if not otherwise shown: According to DIN ISO 2768-1 Linear measures: up to 30mm class M, otherwise class C According to DIN ISO 2768-2 Form and position: class L</div>				<div>DO NOT SCALE DRAWING</div>		<div>FIRST ANGLE PROJECTION</div> <div></div>			
						BEACON OPTONICS							
		NAME		SIGNATURE		DATE		Family Shimmer Series					
DRAWN		Ankur Sharma		Ankur Sharma		15.02.2023							
CHK'D		Anuj Sharma		Anuj Sharma		15.02.2023		PRT NO. BO10-Shimmer-16x1-28353030-60°					
APPV'D		Pradyumna Shandilya		Pradyumna		15.02.2023							
MATERIAL:		Polycarbonate(Makrolon 2407,Teijin 1225Z)						DWG NO. BO10				A4	
1:-All Dimensions are in mm 2:-Open Tolerance is +/- 0.2		This drawing is the property of Beacon Optonics. It may not be reproduced, copied or communicated without a written agreement with Beacon Optonics.										REVISION NO.	
								WEIGHT: 8.2Gm		SCALE:1:1			