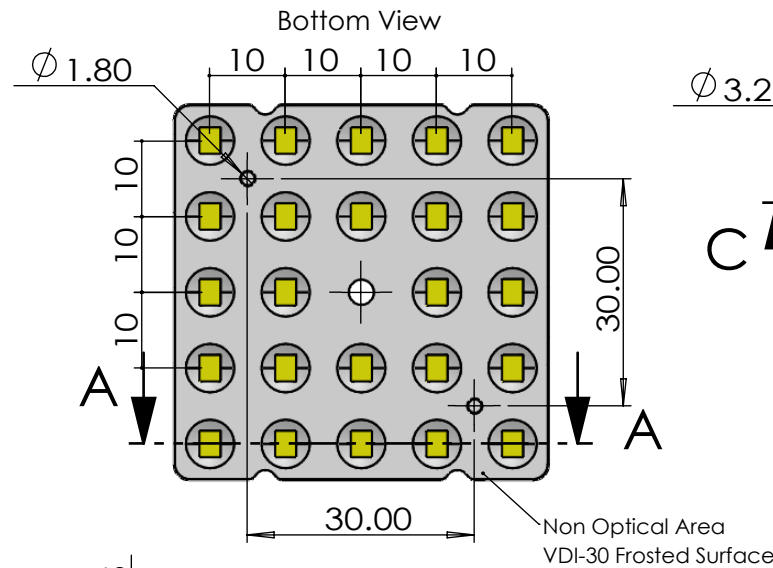
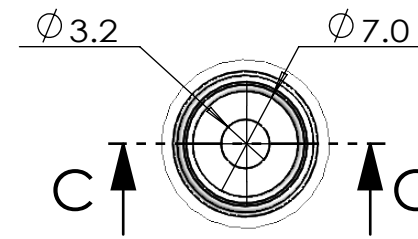


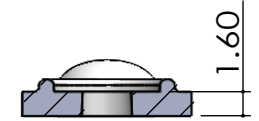
Side View



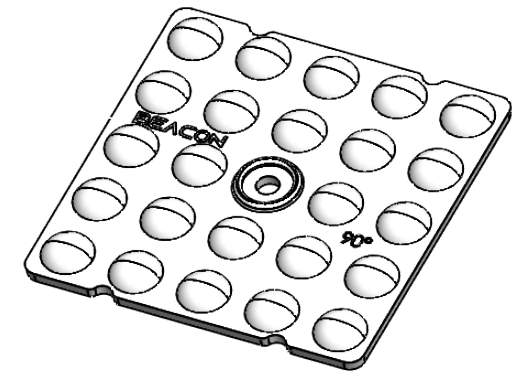
SECTION A-A



DETAIL B  
SCALE 2 : 1


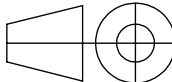


SECTION C-C  
SCALE 2 : 1



Isometric View

- Lens Material : Polycarbonate(Makrolon 2407&2647/Teijin 1225Z)
- Operating Temperature : PC: -40°C~+110°C(Upper Limit +120°C)
- UL Flammability : PC 2407/1225Z: V-2 @0.75mm & HB @2.7mm
- UL RTI Elec : PC 2407/1225Z: 125°C @1.5mm
- Light Transmission Rate 400nm~900nm > 90%

<div><p><b>BEACON OPTRONICS</b> The Shape of Light</p></div> <div>Plastic Moulding General Tolerances if not otherwise shown: According to DIN ISO 2768-1 Linear measures: up to 30mm class M, otherwise class C According to DIN ISO 2768-2 Form and position: class L</div>				DO NOT SCALE DRAWING		FIRST ANGLE PROJECTION 	
				<b>BEACON OPTRONICS</b>			
	NAME	SIGNATURE	DATE	<div>Family</div> <div><b>Blaze Series</b></div> <div>PRT NO.</div> <div><b>BO09-Blaze-24x1-28353030-90°</b></div>			
DRAWN	Ankur Sharma	Ankur Sharma	21.02.2023				
CHK'D	Anuj Sharma	Anuj Sharma	21.02.2023				
APPV'D	Pradyumna Shandilya	Pradyumna	21.02.2023				
MATERIAL:	Polycarbonate(Makrolon 2407,Teijin 1225Z)						
<div>1:-All Dimensions are in mm</div> <div>2:-Open Tolerance is +/- 0.2</div>	<div>This drawing is the property of Beacon Optronics. It may not be reproduced, copied or communicated without a written agreement with Beacon Optronics.</div> <div>WEIGHT: 5.8Gm</div>			DWG NO.		<div><b>BO09</b></div> <div>REVISION NO</div>	
						<b>A4</b>	
				SCALE:1:1		SHEET 1 OF 1	